

March Employment Report

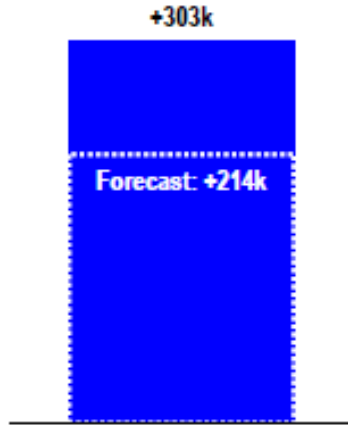
SUMMARY

The Labor Department's March employment report beats expectations with 303,000 payrolls added, compared to the 214,000 projected. Overall, a stronger report than February, showing a continued challenging labor market for employers, particularly in Construction, Government, and Education & Health Services industries.

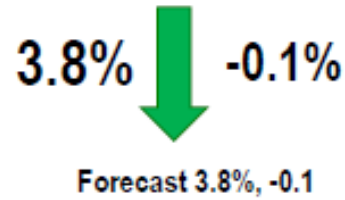
KEY TAKE AWAYS

- **Job creation: 303,000** new payrolls, expected growth was 214,000, tied with May 2023 for strongest since January of 2023
- **Unemployment Rate** fell 0.1% to 3.8% which aligned with expectations.
- **Average Hourly Earnings** rose 0.3%, in alignment with expectations.

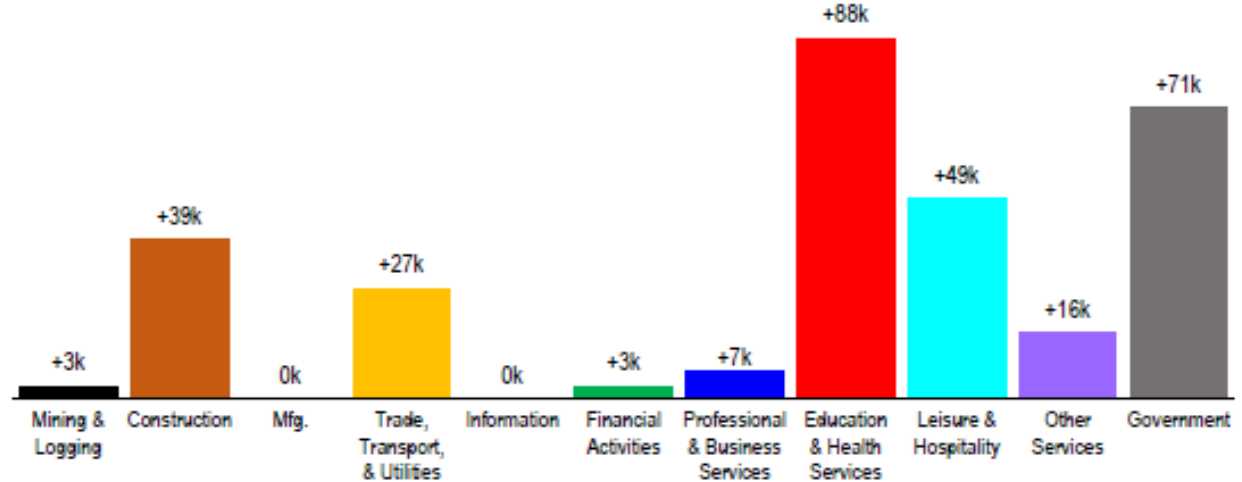
MARCH NEW PAYROLLS



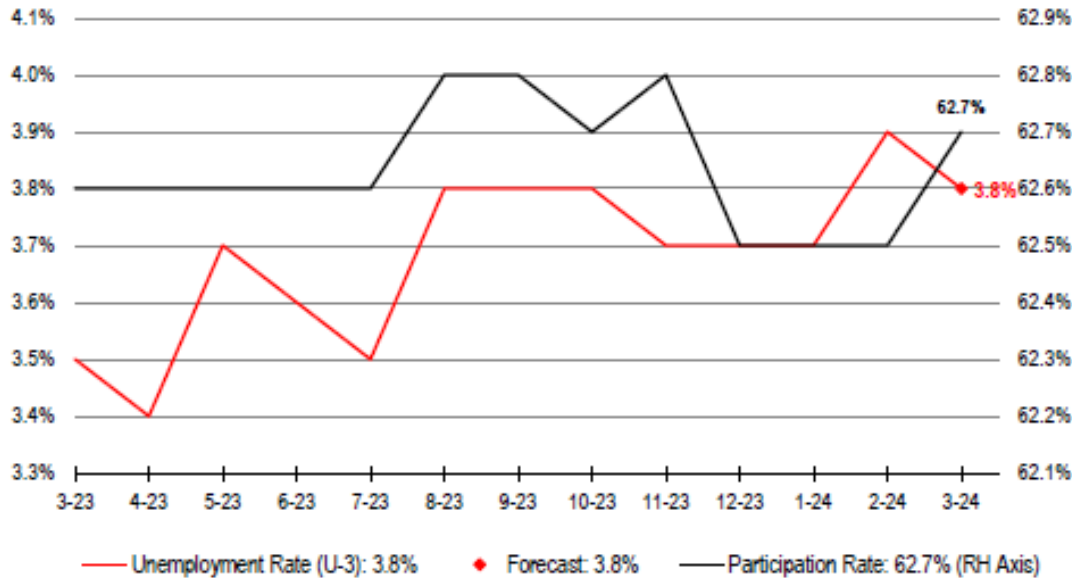
UNEMPLOYMENT RATE



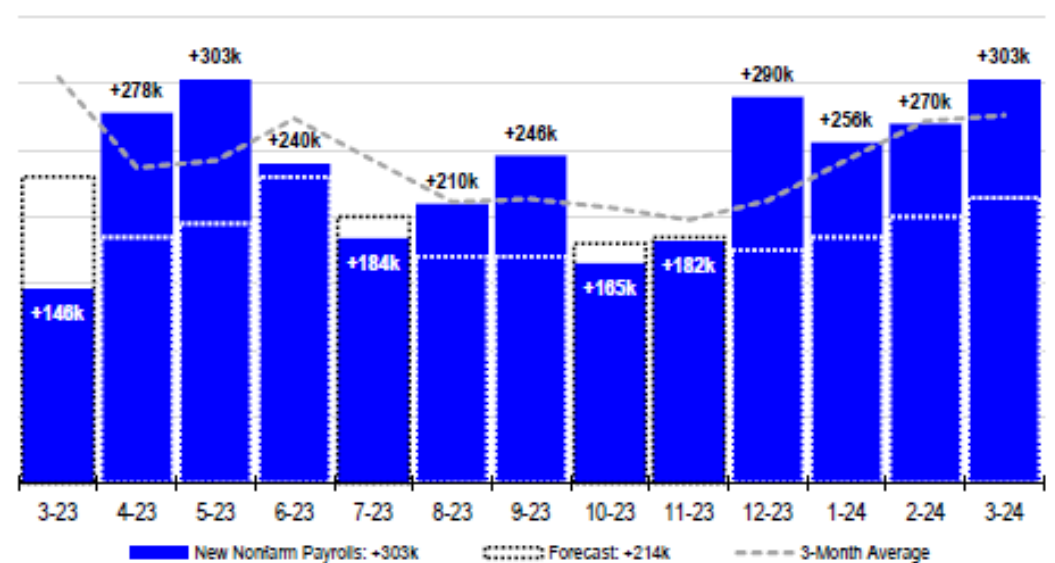
NEW PAYROLLS BY INDUSTRY



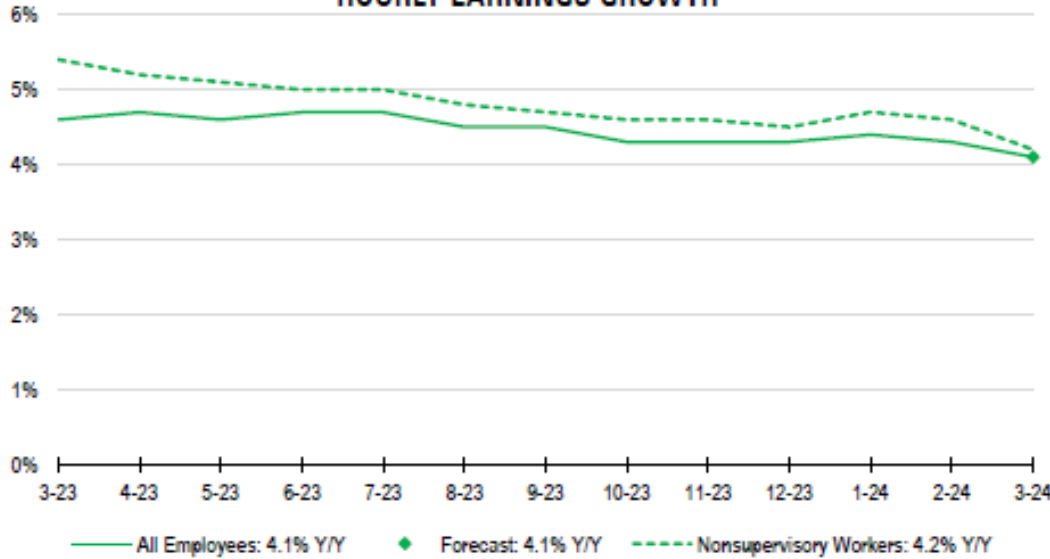
UNEMPLOYMENT RATE



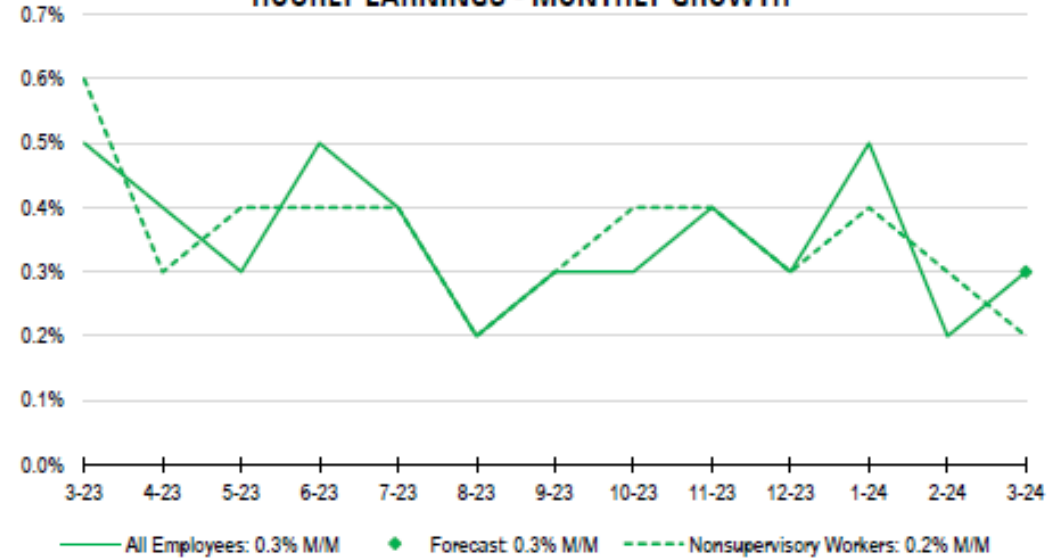
MONTHLY JOB CREATION



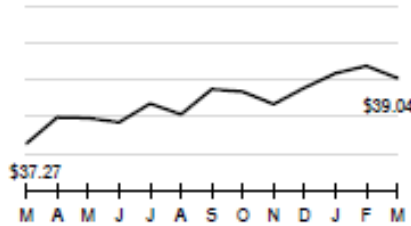
HOURLY EARNINGS GROWTH



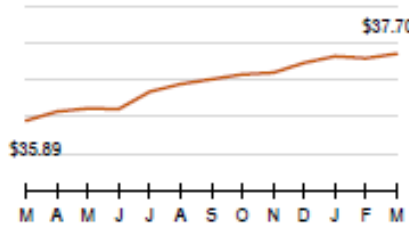
HOURLY EARNINGS - MONTHLY GROWTH



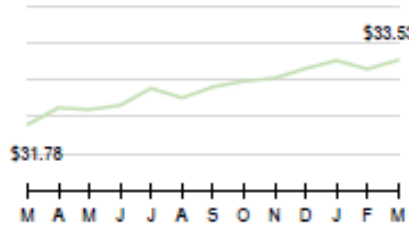
Mining/Logging



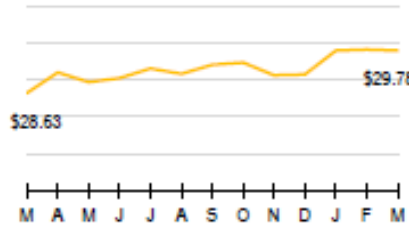
Construction



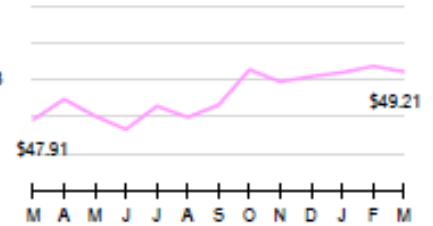
Manufacturing



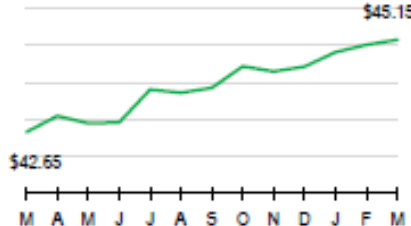
Trade, Transport, Utilities



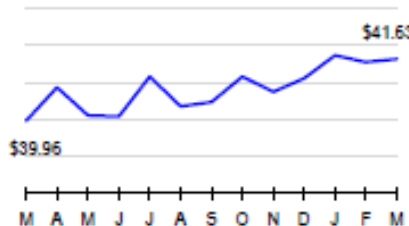
Information



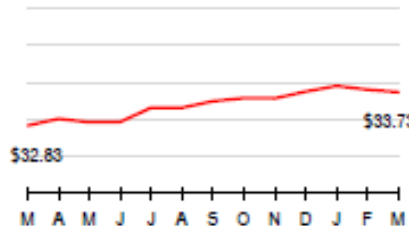
Financial Activities



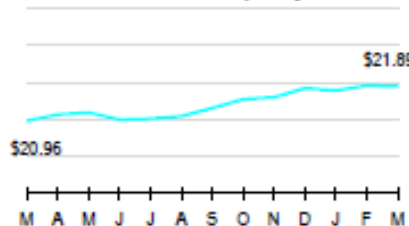
Professional & Business Svcs.



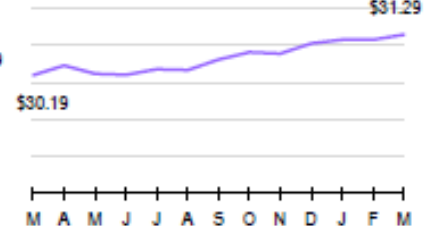
Education & Health Svcs.



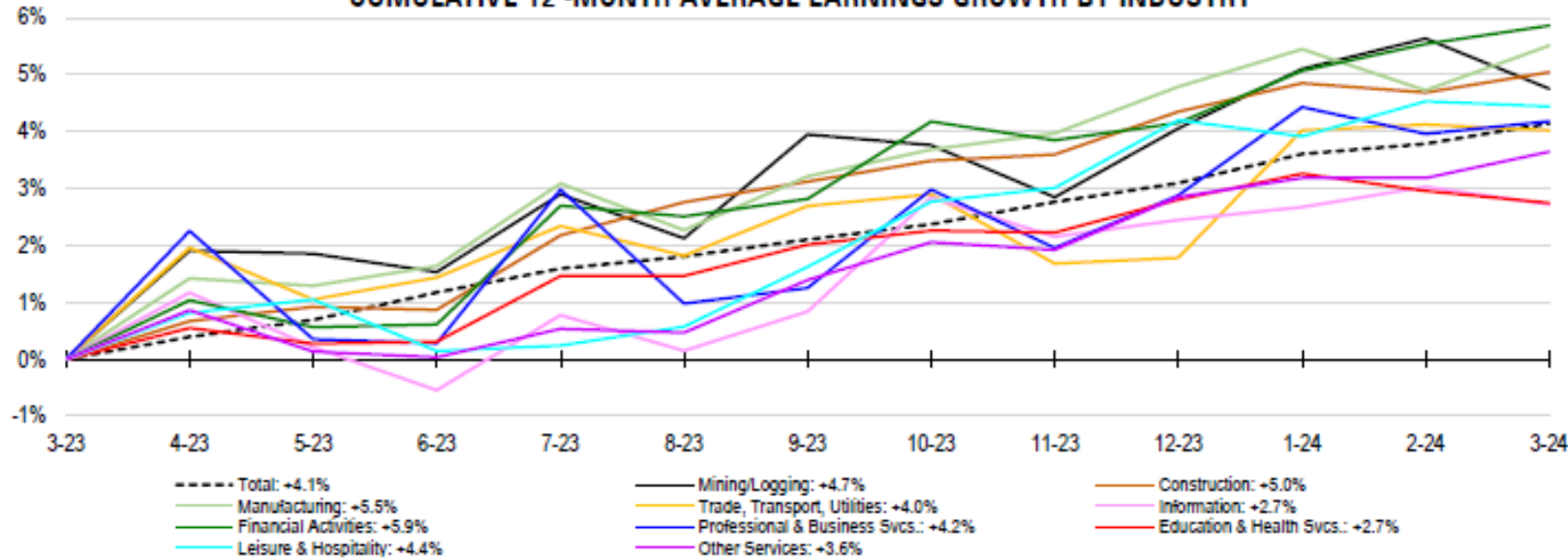
Leisure & Hospitality



Other Services

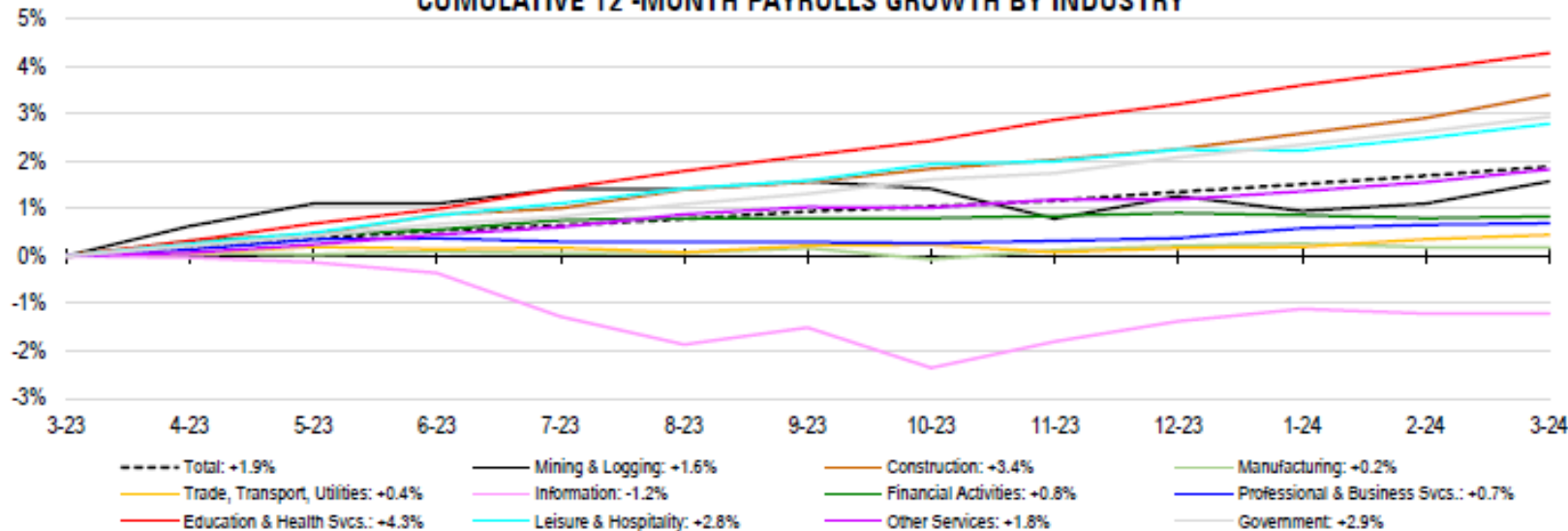


CUMULATIVE 12 -MONTH AVERAGE EARNINGS GROWTH BY INDUSTRY

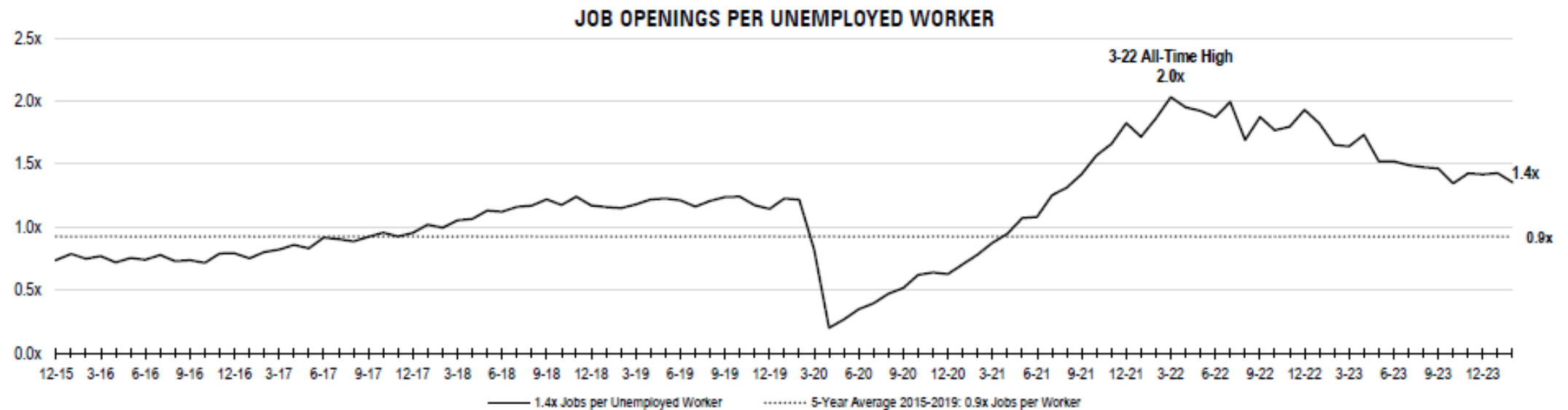
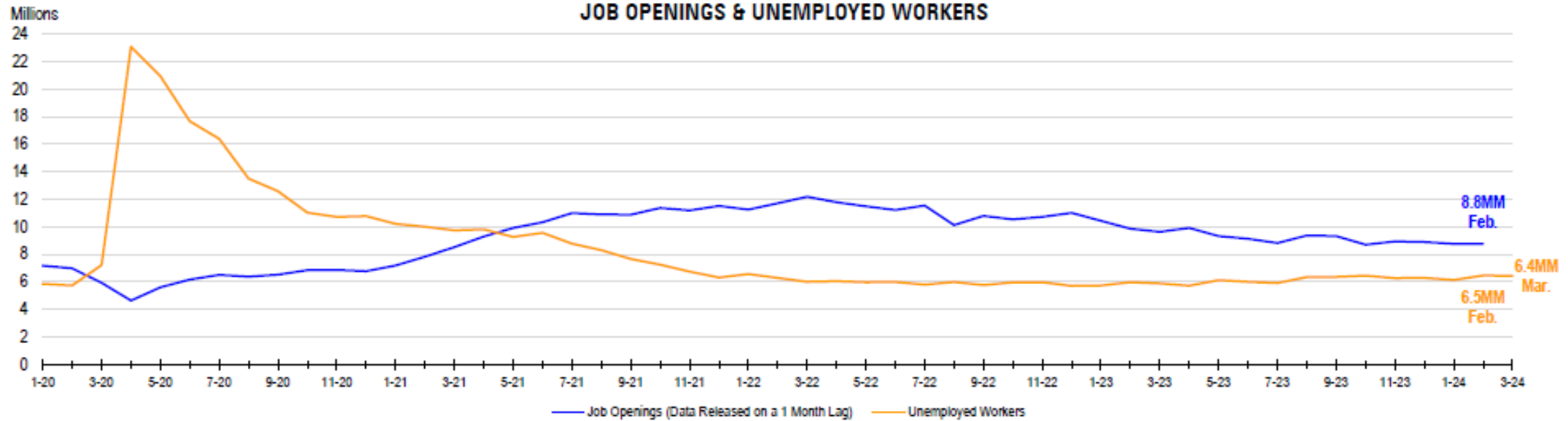


Monthly Earnings Growth	March
Mining/Logging	-0.8%
Construction	+0.3%
Manufacturing	+0.8%
Trade, Transport, Utilities	-0.1%
Information	-0.3%
Financial Activities	+0.3%
Professional & Business Svcs.	+0.2%
Education & Health Svcs.	-0.2%
Leisure & Hospitality	-0.1%
Other Services	+0.4%
Total	+0.3%

CUMULATIVE 12 -MONTH PAYROLLS GROWTH BY INDUSTRY



Monthly Payrolls Growth	March
Mining/Logging	+0.5%
Construction	+0.5%
Manufacturing	0.0%
Trade, Transport, Utilities	+0.1%
Information	0.0%
Financial Activities	+0.0%
Professional & Business Svcs.	+0.0%
Education & Health Svcs.	+0.3%
Leisure & Hospitality	+0.3%
Other Services	+0.3%
Government	+0.3%
Total	+0.2%



Contact TalenTrust
for your **retention** and **recruitment** needs:

 303.838.3334

 connections@talentrust.com